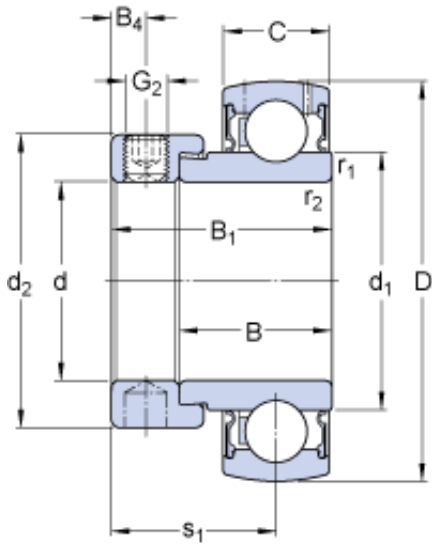




## Stainless steel bearing equipment Co....



E2.YET 206-103 Bearing 2D drawings and 3D CAD models

30.163 mm x 62 mm x 23.8 mm SKF E2.YET  
206-103 deep groove ball bearings

Bearing No. E2.YET 206-103

Size	62x30.163x35.7 mm
Bore Diameter	62 mm
Outer Diameter	30,163 mm
Width	35,7 mm
d	30.163 mm
D	62 mm
B <sub>1</sub>	35.7 mm
C	18 mm
d <sub>1</sub>	39.7 mm
d <sub>2</sub>	44.1 mm
B	23.8 mm
B <sub>4</sub>	5.95 mm
r <sub>1,2</sub> - min.	0.6 mm
s <sub>1</sub>	26.7 mm
Basic dynamic load rating - C	19.5 kN
Basic static load rating - C <sub>0</sub>	11.2 kN
Fatigue load limit - P <sub>u</sub>	0.475 kN
Limiting speed with shaft tolerance h6	6300 r/min
Calculation factor - f <sub>0</sub>	14
Mass bearing	0.3 kg
Thread - G <sub>2</sub> - 5/16-24 UNF	5/1624 UNF
Hexagonal key size for grub screw - H	3.969 mm



## **Stainless steel bearing equipment Co....**